



# SNRPN Polyclonal Antibody

<b>Catalog No</b>	YP-Ab-02247
<b>Isotype</b>	IgG
<b>Reactivity</b>	Human;Mouse;Rat
<b>Applications</b>	WB;IHC
<b>Gene Name</b>	SNRPN
<b>Protein Name</b>	Small nuclear ribonucleoprotein-associated protein N
<b>Immunogen</b>	The antiserum was produced against synthesized peptide derived from the Internal region of human SNRPN. AA range:21-70
<b>Specificity</b>	SNRPN Polyclonal Antibody detects endogenous levels of SNRPN protein.
<b>Formulation</b>	Liquid in PBS containing 50% glycerol, 0.5% BSA and 0.02% sodium azide.
<b>Source</b>	Polyclonal, Rabbit,IgG
<b>Purification</b>	The antibody was affinity-purified from rabbit antiserum by affinity-chromatography using epitope-specific immunogen.
<b>Dilution</b>	WB 1:500-2000;IHC-p 1:50-300
<b>Concentration</b>	1 mg/ml
<b>Purity</b>	≥90%
<b>Storage Stability</b>	-20°C/1 year
<b>Synonyms</b>	SNRPN; HCERN3; SMN; Small nuclear ribonucleoprotein-associated protein N; snRNP-N; Sm protein D; Sm-D; Sm protein N; Sm-N; SmN; Tissue-specific-splicing protein
<b>Observed Band</b>	26kD
<b>Cell Pathway</b>	Nucleus.
<b>Tissue Specificity</b>	Expressed in brain and lymphoblasts.
<b>Function</b>	disease:Patients with the autoimmune disease systemic lupus erythematosus (SLE) have autoantibodies directed against some of the individual snRNP polypeptides. The most common autoantigen is called Sm. N bears Sm epitopes.,function:May be involved in tissue-specific alternative RNA processing events.,miscellaneous:Encoded on a bicistronic transcript that encode for two proteins, SNRPN and SNURF.,miscellaneous:Encoded on a bicistronic transcript that encode for two proteins, SNRPN and SNURF. In addition to the primary 1.6-kb bicistronic SNURF-SNRPN transcript, SNURF-only transcript is also detected.,similarity:Belongs to the snRNP SmB/SmN family.,similarity:Belongs to the SNURF family.,subunit:Interacts with TDRD3.,tissue specificity:Expressed in brain and lymphoblasts.,tissue specificity:Expressed in heart, skeletal muscle and lymphoblasts (at protein level). Expressed in brain, pancreas

**Background**

The protein encoded by this gene is one polypeptide of a small nuclear ribonucleoprotein complex and belongs to the snRNP SMB/SMN family. The protein plays a role in pre-mRNA processing, possibly tissue-specific alternative splicing events. Although individual snRNPs are believed to recognize specific nucleic acid sequences through RNA-RNA base pairing, the specific role of this family member is unknown. The protein arises from a bicistronic transcript that also encodes a protein identified as the SNRPN upstream reading frame (SNURF). Multiple transcription initiation sites have been identified and extensive alternative splicing occurs in the 5' untranslated region. Additional splice variants have been described but sequences for the complete transcripts have not been determined. The 5' UTR of this gene has been identified as an imprinting center. Alternative splicing

**matters needing attention**

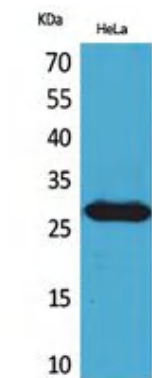
Avoid repeated freezing and thawing!

**Usage suggestions**

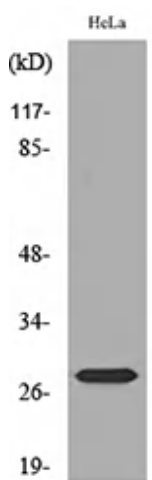
This product can be used in immunological reaction related experiments. For more information, please consult technical personnel.



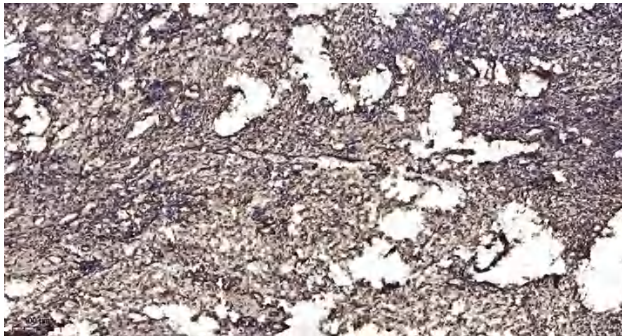
## Products Images



Western Blot analysis of HeLa cells using SNRPN Polyclonal Antibody. Secondary antibody(catalog#:RS0002) was diluted at 1:20000 cells nucleus extracted by Minute TM Cytoplasmic and Nuclear Fractionation kit (SC-003,Inventbiotech,MN,USA).



Western blot analysis of lysate from HeLa cells, using SNRPN Antibody.



Immunohistochemical analysis of paraffin-embedded human oophoroma. 1, Antibody was diluted at 1:200(4° overnight). 2, Tris-EDTA,pH9.0 was used for antigen retrieval. 3,Secondary antibody was diluted at 1:200(room temperature, 45min).